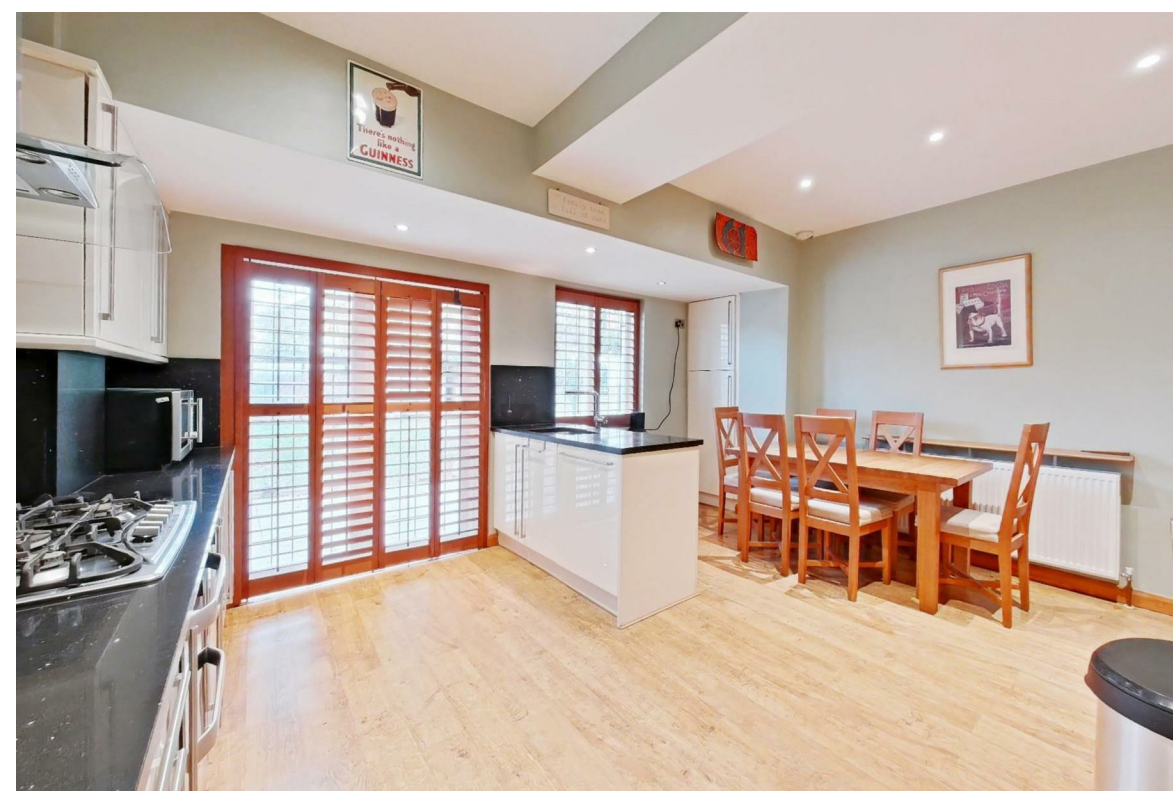




MARNE AVENUE

WELLING DA16 2EY

- 4 BEDROOM SEMI DETACHED
- HIGHLY SOUGHT AFTER SCIENTIST ESTATE CLOSE TO THE STATION/SHOPS/SCHOOLS
- NO FORWARD CHAIN
- PARKING FOR 2 VEHICLES AND INTEGRAL GARAGE
- DOWNSTAIRS WC AND UPSTAIRS BATHROOM
- GOOD DECORATIVE ORDER THROUGHOUT
- LARGE THROUGH LOUNGE
- EPC - D
- COUNCIL TAX BAND E
- 1432 SQ FT



CHAIN FREE- WALKING DISTANCE TO STATION- HIGHLY SOUGHT AFTER SCIENTIST ESTATE

Situated on the ever-popular Scientist Estate in Welling, this extended four-bedroom semi-detached home offers generous living space, a convenient layout, and an excellent location—perfect for families. The property is ideally placed close to Welling High Street, the mainline station, and a superb selection of highly regarded primary and secondary schools.

The ground floor features a spacious through lounge, ideal for both relaxing and entertaining, alongside a kitchen/diner to the rear overlooking the garden. Additional benefits include a downstairs WC and an integral garage, providing excellent storage and practicality.

Upstairs, the home offers four well-proportioned bedrooms and a large family bathroom complete with a separate shower, catering comfortably to family living.

Externally, the property boasts a flat, well-sized rear garden, mainly laid to lawn, ideal for children or outdoor enjoyment. To the front, there is off-street parking for two vehicles.

Presented in good decorative order throughout and offered to the market with no forward chain, this fantastic family home is ready to move straight into and enjoy.

4 BEDROOMS • 2 RECEPTION ROOMS • 2 BATHROOMS

